



Patents Pending

# KILL TIME

Are you using your disinfectant correctly? If you're like most people, you spray, wait for a few seconds, and then immediately wipe or rinse it off. By doing this, your disinfectant is leaving behind thousands of germs because it has to remain wet for a long time.

## DISINFECT IN SECONDS, NOT MINUTES

### What is a Kill Time?

"Kill time" is the amount of time a product must sit on a surface and remain visibly wet before it disinfects as promised. Kill times are often referred to as "dwell time" or "contact time." They all mean the same thing. If the product is applied, and either dries or is wiped away before the kill time listed on the product label, the product will not provide the advertised benefit and is not guaranteed to be effective.

### Who has time to wait?

Most disinfectants on the market have extremely long kill times. When was the last time you waited 4 minutes, or longer, to apply a disinfectant before wiping and rinsing the surface?

If you're like most, the answer is never.

<p><b>Kill Time: 4 min</b></p> 	<p><b>Kill Time: 5 min</b></p> 	<p><b>Kill Time: 10 min</b></p> 
--	--	---

**KILL TIME OF 15 SECONDS**



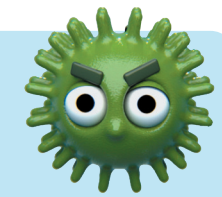
### Nothing Works Faster Than SoRite

SoRite has extremely fast kill times compared to the competition. Instead of having to wait minutes to work, SoRite kills bacteria and viruses in 15 seconds. Based on tests completed at Independent 3rd Party Certified GLP labs, SoRite has both sanitizing and disinfecting claims on kill times. This includes a 15-second kill time on hard-to-kill viruses like the Covid-19,\* and hard-to-kill bacteria like MRSA. Simply put: Nothing works faster than SoRite.

\*SARS-CoV-2

### Want to Learn More?

Contact us to learn more about SoRite and why it's the better and faster disinfectant. Call **888-379-3232**



**KILLS COVID-19 VIRUS\* IN 15 SEC.**